

korenix

A Beijing Electronics Group Company

JetWave 2310 Series
Quick Installation Guide V1.0

Overview

The JetWave 2310 is an industrial grade Secure 3G Modem/IP gateway which enables Ethernet access over 3G network. The JetWave 2310 is equipped with one embedded 3G module, 2 Gigabit Ethernet ports and dual SIM to support UMTS/ HSPA+ band and backward support of GSM/GPRS/ EDGE quad-band.

Band Information

GSM/GPRS/EDGE: Quad band 850/900/1800/1900MHz

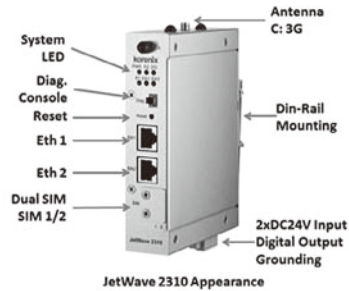
UMTS/HSPA+: Five band 800/850/900/1900/2100MHz

Package Check List

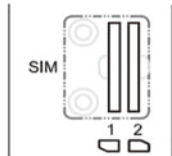
- ▶ JetWave 2310 Industrial 3G Modem/IP Gateway
- ▶ 3G Antenna
- ▶ Quick Installation Guide
- ▶ DIN rail mount kits
- ▶ Wall mount plate

Appearance

JetWave 2310 Appearance



Dual SIM Socket & Direction



Antenna Number

C: 3G Antenna for JetWave 2310.

A/B/D: Reserved for JetWave 2311 WIFI/LTE

Installation

DC Input

Insert the positive and negative wires into the V+ and V- contact on the terminal block connector. The device supports dual DC power input, the typical power source is DC 24V (range from 12-48VDC).

Insert the SIM

- ▶ Unlock the front plate of Dual SIM Socket
- ▶ Insert the SIM card into SIM 1 (Default startup SIM Socket is SIM 1) before power on system.
- ▶ The system may take around 1 minutes to startup, and then it will search the 3G SIM card in SIM1 socket and automatically connect to your ISP.
- ▶ If you want to use SIM 2 for carrier provider redundant, please insert the 2 SIM cards before power on the system.
- ▶ If you want to use SIM 2 as startup SIM socket, please go to Web GUI to modify the setting.

If the 3G connection is not connected, please go to Web GUI to check the 3G Status and Settings.

Mounting The Unit/Antenna

- ▶ JetWave 2310 support Din-Rail mounting, the mounting kit is pre-installed. You can mount the device to the DIN Rail directly.
- ▶ Mount the default antenna to the antenna number C.

Web GUI

The JetWave 2310 Series provides web management interface for basic and advanced settings.

Before configuration, please make sure your system meets the following requirements:

- ▶ A computer coupled with 10/100/1000 Base-T(X) adapter
- ▶ Configure the computer with a static IP address of 192.168.10.X (X cannot be 0, 1, nor 255)
- ▶ The default IP Address of JetWave 2310 is 192.168.10.1.
- ▶ The 2 gigabit ports work as Bridge mode in default. All are the LAN port and you can connect either of them to access the Web GUI.
- ▶ Open web browser (Ex: IE, Chrome, Firefox...) and enter the IP address (Default: 192.168.10.1). You will see the System Login page.
- ▶ The default User Name is "admin".
- ▶ The default Password is "admin".
- ▶ Check User Manual for advanced settings.
- ▶ IF the web browser is not access, please check your firewall, JAVA version or contact your support window for further help.

Note: If you forget the IP Address, you can use Korenix View Utility to search the device's IP address.

Korenix View Utility

The Korenix View Utility provides you convenient tool to scan the network and configure the device.

Step 1: Open the Korenix View Utility. (Must later than JetView V1.6)

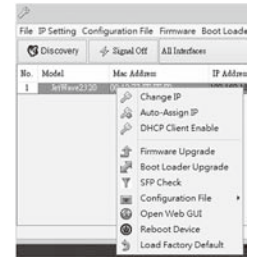
Step 2: Select the correct NIC (Network Interface Card) from the NIC list.

Step 3: Click "Discovery", and then the Nodes and its IP address can be found and listed in Node list.



Step 4: After you scan the network, select the device and click "Open Web GUI" to access the web management interface. You can also modify the IP address/Netmask directly on the selected entry and then click "Change IP" to change IP settings.

Note: Please check the User Manual to configure the other software settings.



Support

5 Years Warranty

Each of Korenix's product line is designed, produced, and tested with high industrial standard. Korenix warrants that the Product(s) shall be free from defects in materials and workmanship for a period of five (5) years from the date of delivery provided that the Product was properly installed and used.

This warranty is voided if defects, malfunctions or failures of the warranted Product are caused by damage resulting from force measure (such as floods, fire, etc.), other external forces such as power disturbances, over spec power input, or incorrect cabling; or the warranted Product is misused, abused, or operated, altered and repaired in an unauthorized or improper way.

Attention! To avoid system damage caused by sparks, please DO NOT plug in power connector when power is on.

The product is in compliance with Directive 2002/95/EC and 2011/65/EU of the European Parliament and of the Council of 27 January 2003 on the restriction of the use of certain hazardous substances in electrical and electronics equipment (RoHS Directives & RoHS 2.0)

Korenix Customer Service

KoreCARE is Korenix Technology's global service center, where our professional staffs are ready to solve your problems at any time Korenix global service center's e-mail is KoreCARE@korenix.com.

For more information and documents download please visit our website:

<http://www.korenix.com/downloads.htm>