


## JetWave 2212X/S

Industrial 802.11 a/b/g/n 2.4G/5G 2T2R MIMO Wireless AP  
Quick Installation Guide V1.0

### Overview

JetWave 2212X/S is a wireless access point. They equip with 2-port Fast Ethernet and IEEE 802.11a/b/g/n 2.4G and 5G wireless radio. With the JetWave 2212X/S wireless access point, a network designer will easily achieve the integration of wired and wireless networks. JetWave2212S equips with 2 RS232/422/485 which could support versatile serial application, such as TCP Server, TCP Client and UDP Listening. The serial data can be transmit through the wireless interface.

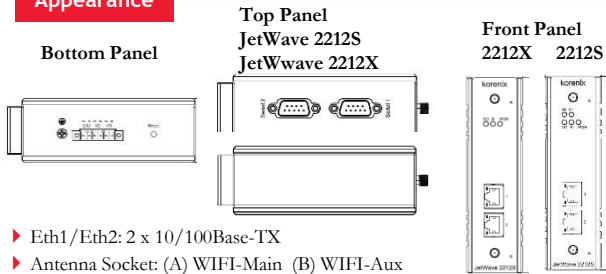
#### Safety Instruction

 Warning! Read the user manual before connecting the system to the power source.

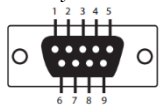
#### Radio Equipment Directive 2014/53/EU Declaration

The product may be operated in all European Union countries. While you see the CE Marking printed on our product, it indicates the product complies with the requirement of the Radio Equipment Directive 2014/53/EU. We provides formal declaration of RED for wireless product, different product may comfort to different standards of Health & Safety, EMC, Radio and other specific standard. You can download the formal document of the product in our website or apply from our Sales/Technical people.

### Appearance



- ▶ Eth1/Eth2: 2 x 10/100Base-TX
- ▶ Antenna Socket: (A) WIFI-Main (B) WIFI-Aux
- ▶ Reset: Press for 7 seconds to restore default setting
- ▶ Serial: Connect the serial device to the unit male DB9 port by the pin assignment table. (Jetwave2212S)



Pin #	RS232	RS-422/ RS485(4 wire)	RS485(2 wire)
1	DCD	TX-	DATA-
2	RXD	TX+	DATA+
3	TXD	RX-	
4	DTR	RX+	
5	GND	GND	GND
6	DSR		
7	RTS		
8	CTS		
9	RI		

#### Package Check List

- ▶ JetWave 2212X or 2212 S Product Unit
- ▶ 2x WIFI Antenna
- ▶ 6-pin terminal block
- ▶ Quick Installation Guide
- ▶ Din-Rail Kit

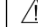
### Installation

#### Power Input

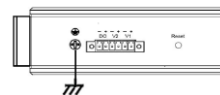
The device supports dual DC power input. The typical power input is 24V (Range from 9~26VDC).

#### Power the unit

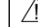
- ▶ Connect the power, the unit will power on .
- ▶ When the unit is ready, the PWR LED turns Green.

 **Notice**

**Mounting The Unit/Antenna and well Ground is Must:** JetWave 2212X/S supports Din-Rail mounting, the mounting kit is pre-installed. You can mount the device to the DIN Rail directly. Connect the Ethernet cable, Antenna and Ground before power on system. Ground is important and **MUST** in field.



Grounding

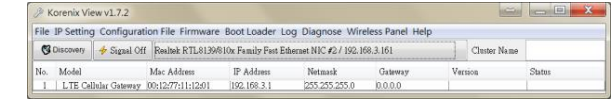
 **Warning**

- The DC connecting line must conform to the safety regulations of the country in which the device is installed.
- Properly connect the device to a protective conductor.

### Korenix View Utility

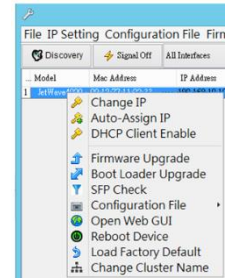
The Korenix View Utility provides you a convenient way to scan the network and configure the connected Korenix device.

- Step 1: Open the Korenix View Utility. (V1.7 or later version)
- Step 2: Select the correct NIC (Network Interface Card) from the NIC list
- Step 3: Click “Discovery”, and then the Nodes and its IP address can be found and listed in the Node list.



Step 4: After you scan the network, select the device and click “Open Web GUI” to access the web management interface.

You can modify the IP address/Netmask directly on the selected entry and then click “Change IP” to change IP settings.



### Web GUI

The JetWave 2212X/S provides web management interface for basic and advanced settings. Before configuration, please make sure your system meets the following requirements:

- ▶ A computer coupled with 10/100 Base-T(X) adapter.
- ▶ Configure the computer with a static IP address of 192.168.10.X (X cannot be 0, 1, or 255).
- ▶ Connect JetWave 2212X/S to Eth 1/ Eth 2 by standard Ethernet cable. The Eth 1 /Eth 2 LED turns Green means the link is activated.
- ▶ The Ethernet default IP is “192.168.10.1”
- ▶ Open web browser (Ex: IE, Chrome, Firefox...) and enter the IP address of the product. You will see the System Login page.
- ▶ Check User Manual for advanced settings.
- ▶ Please access to the web interface via <https://>, if the web browser is not access, please check your firewall or contact your support window for further help.
- ▶ Note: If you forget the IP Address, you can use Korenix View Utility to search the device’s IP address, the program can be found at Download page of the Korenix website.

### Support

#### 5 Years Warranty

Each of Korenix’s product line is designed, produced, and tested with high industrial standard. Korenix warrants that the Product(s) shall be free from defects in materials and workmanship for a period of five (5) years from the date of delivery provided that the Product was properly installed and used. This warranty is voided if defects, malfunctions or failures of the warranted Product are caused by damage resulting from force measure (such as floods, fire, etc.), other external forces such as power disturbances, over spec power input, or incorrect cabling; or the warranted product is misused, abused, or operated, altered and repaired in an unauthorized or improper way.

**Attention! To avoid system damage caused by sparks, please DO NOT plug in power connector when power is on.**

The product is in compliance with Directive 2002/95/EC and 2011/65/EU of the European Parliament and of the Council of 27 January 2003 on the restriction of the use of certain hazardous substances in electrical and electronics equipment (RoHS Directives & RoHS 2.0)

#### Korenix Customer Service

KoreCARE is Korenix Technology’s global service center, where our professional staff are ready to solve your problems at any time Korenix global service center’s e-mail is [KoreCARE@korenix.com](mailto:KoreCARE@korenix.com). For more information and documents download please visit our website: <http://www.korenix.com/downloads.htm>