


Overview

JetWave 2212G is a wireless access point. They equips with 2-port Fast Ethernet and IEEE 802.11a/b/g/n/ac 2.4G and 5G wireless radio. With the JetWave 2212G wireless access point, a network designer will easily achieve the integration of wired and wireless networks

Safety Instruction

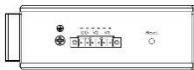
 Warning! Read the user manual before connecting the system to the power source.

Radio Equipment Directive 2014/53/EU Declaration

The product may be operated in all European Union countries. While you see the CE Marking printed on our product, it indicates the product complies with the requirement of the Radio Equipment Directive 2014/53/EU. We provides formal declaration of RED for wireless product, different product may comfort to different standards of Health & Safety, EMC, Radio and other specific standard. You can download the formal document of the product in our website or apply from our Sales/Technical people.

Appearance

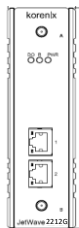
Bottom Panel



Top Panel



Front Panel



- ▶ Eth1/Eth2: 2 x 10/100/1000Base-TX
- ▶ Antenna Socket: (A) WIFI-Main (B) WIFI-Aux
- ▶ Reset: Press for 7 seconds to restore default setting

Package Check List

- ▶ JetWave 2212G Product Unit
- ▶ 2x WIFI Antenna
- ▶ 6-pin terminal block
- ▶ Quick Installation Guide
- ▶ Din-Rail Kit

Installation

Power Input

The device supports dual DC power input. The typical power input is 12~48VDC.

Passive PoE 24/48VDC

Power the unit

- ▶ Connect the power, the unit will power on .
- ▶ When the unit is ready, the PWR LED turns Green.

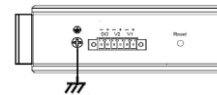
Operating Temperature

-40 ~ 75°C

Notice

Mounting The Unit/Antenna and well Ground is Must: JetWave 2212G supports Din-Rail mounting, the mounting kit is pre-installed. You can mount the device to the DIN Rail directly. Connect the Ethernet cable, Antenna and Ground before power on system. Ground is important and MUST in field.

Grounding



Warning

- The DC connecting line must conform to the safety regulations of the country in which the device is installed.
- Properly connect the device to a protective conductor.

Web GUI

The JetWave 2212G provides web management interface for basic and advanced settings. Before configuration, please make sure your system meets the following requirements:

- ▶ A computer coupled with 10/100/1000 Base-T(X) adapter.
- ▶ Configure the computer with a static IP address of 192.168.10.X (X cannot be 0, 1, or 255).
- ▶ Connect JetWave 2212G to Eth 1/ Eth 2 by standard Ethernet cable. The Eth 1 /Eth 2 LED turns Green means the link is activated.
- ▶ The Ethernet default IP is “192.168.10.1”
- ▶ Open web browser (Ex: IE, Chrome, Firefox...) and enter the IP address of the product. You will see the System Login page.
- ▶ Check User Manual for advanced settings.
- ▶ Please access to the web interface via <https://>, if the web browser is not access, please check your firewall or contact your support window for further help.
- ▶ Note: If you forget the IP Address, you can use Korenix View Utility to search the device’s IP address, the program can be found at Download page of the Korenix website.

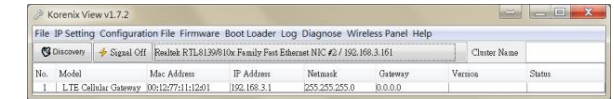
Korenix View Utility

The Korenix View Utility provides you a convenient way to scan the network and configure the connected Korenix device.

Step 1: Open the Korenix View Utility. (V1.7 or later version)

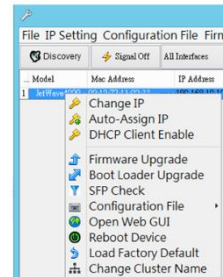
Step 2: Select the correct NIC (Network Interface Card) from the NIC list

Step 3: Click “Discovery”, and then the Nodes and its IP address can be found and listed in the Node list.



Step 4: After you scan the network, select the device and click “Open Web GUI” to access the web management interface.

You can modify the IP address/Netmask directly on the selected entry and then click “Change IP” to change IP settings.



Support

5 Years Warranty

Each of Korenix’s product line is designed, produced, and tested with high industrial standard. Korenix warrants that the Product(s) shall be free from defects in materials and workmanship for a period of five (5) years from the date of delivery provided that the Product was properly installed and used. This warranty is voided if defects, malfunctions or failures of the warranted Product are caused by damage resulting from force measure (such as floods, fire, etc.), other external forces such as power disturbances, over spec power input, or incorrect cabling; or the warranted product is misused, abused, or operated, altered and repaired in an unauthorized or improper way.

Attention! To avoid system damage caused by sparks, please DO NOT plug in power connector when power is on.

The product is in compliance with Directive 2002/95/EC and 2011/65/EU of the European Parliament and of the Council of 27 January 2003 on the restriction of the use of certain hazardous substances in electrical and electronics equipment (RoHS Directives & RoHS 2.0)

Korenix Customer Service

KoreCARE is Korenix Technology's global service center, where our professional staff are ready to solve your problems at any time Korenix global service center's e-mail is KoreCARE@korenix.com. For more information and documents download please visit our website: <http://www.korenix.com/downloads.htm>